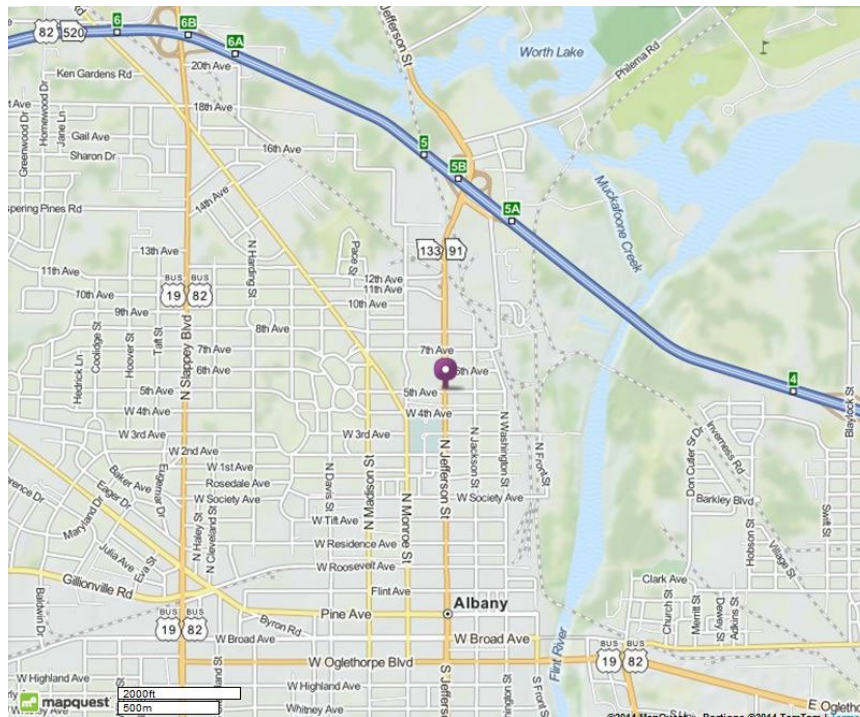


## Directions to Albany, GA Satellite Clinic held at Clark Home Training Facility

The Clark Home Training Facility is located at **1210 N. Jefferson Street, Albany, GA 31701.**



### **From the North: Leesburg to Albany**

- Head south on GA-3 S/US-19 S/Walnut Ave S.
- Merge onto GA-520 E/US-19 S/US-82/Liberty Expwy E via ramp to Georgia 3 S.
- After 1.5 miles, take exit 5 for Georgia 91/Georgia 133/Jefferson St toward Downtown.
- Turn right onto N. Jefferson St and travel for approximately 0.8 mi. Destination is on the left.

### **From the South: Camilla to Albany**

- Head north on GA-3 N/US-19/Liberty Expwy.
- Take exit 5A to merge onto GA-133 N/GA-91 N/N Jefferson St. Make a U-turn after 0.4 miles.
- Travel 1.1 miles on N. Jefferson St. Destination is on the left.

### **From the East: Tifton to Albany**

- Head west on GA-35 S/GA-520 W/US-82 W.
- Slight right onto GA-520 W/US-82 W/Clark Ave.
- Take the ramp onto GA-520 W/US-19 N/US-82 W/Liberty Expwy.
- Take exit 5A to merge onto GA-133 N/GA-91 N/N Jefferson St. Make a U-turn after 0.4 miles.
- Travel 1.1 miles on N. Jefferson St. Destination is on the left.

### **From the West: Dawson to Albany**

- Head southeast on GA-520/US-82 E/Dawson Road.
- Merge onto GA-520 E/US-82E/Liberty Expwy via the ramp to US-19/Tifton/Camilla.
- After 5 miles, take exit 5 for Georgia 91/Georgia 133/Jefferson St toward Downtown.
- Turn right onto N. Jefferson St and travel for approximately 0.8 mi. Destination is on the left.